

IDENTIFYING SOLUTIONS TO A GROWING CHALLENGE



ICMH MISSION

ICMH believes that the right to health applies to all people, including migrants, refugees, and all other people who find themselves on the move for political, economic or environmental reasons. ICMH's work is predicated on the belief that by protecting the health and welfare of people on the move, the public health, social development, and human security interests of society in general are enhanced.

WHAT IS ICMH

ICMH is a non-for-profit Swiss-based association established in 1995 to foster research, training and policy advocacy on migration and health issues. ICMH provides governments, UN agencies and NGOs with current information and technical guidance on emerging challenges in the area of migration and health. It assists them to formulate evidence-based policies and programs designed to protect the health and welfare of people who move, those they leave behind and those they come into contact with and eventually host them. ICMH has been twice designated a WHO Collaborating Centre for Health-related Aspects of People Displaced by Disaster. It has also been made a UNFPA Implementing Partner.



BACKGROUND TO ICMH'S WORK

Today more people are moving faster and further than at any other time in history. The factors pushing and pulling people to move, be it for professional, economic, political or environmental reasons are becoming more evident everywhere. Progress toward achieving the UN

Millennium Development Goals is slow and in many parts of the world the gap between rich and poor people, developed and developing countries is widening just at a time when a growing global economy is calling for people to uproot and move for short or long term employment. The global reach of a media communications industry is meanwhile providing images of the quality of life that can be had elsewhere. Frequent natural and man-made disasters are also forcing people to migrate in larger numbers than before, and in some cases are creating populations of refugees and internally displaced people whose



possibilities of return are often unclear. All this is happening at a time when many countries, irrespective of their need for migrants, are hardening their policies and are

looking for ways of making the entry difficult and their social insertion and health possibly more precarious. The implications of this for the health

and welfare of all those concerned, be they the people who migrate, the families and loved ones they leave behind, or the people they interact with along the way and who ultimately receive them, are becoming more complex and potentially serious. If these implications cannot be understood and responded to in a logical, constructive and proactive fashion, there is a risk that the human security of everyone will suffer and that social instability will follow.

HOW ICMH WORKS

ICMH cooperates with governments, UN agencies, universities and research institutes, and NGOs to develop the research, situation assessments, training and policy formulation that is likely to strengthen the capacity of all stakeholders to take up the challenge of migration and its impact on health and welfare. ICMH has a broad network of members and cooperating partners in all regions of the world and it works with and through this network to ensure that the challenge of migration and health can be taken up in a scientifically meaningful way. ICMH works with a wide range of donors and institutions from the public and private sectors and seeks to show how all partners can come together around social and public health concerns of such import as those that migration presents. ICMH brings a multi-disciplinary approach to its work and its network, which spans twenty countries, includes epidemiologists, social scientists, geographers, policy specialists, communication experts and trainers.

RECENT PUBLICATIONS

2006: Migration and diabetes: the emerging challenge.

2005: Migration in Central Asia and its possible implications for women and children.

2005: Expert review: the public health impact of the Tsunami.

2005: Tsunami: learning from the humanitarian response.

2004: The process of social insertion of migrants and refugees in the context of health and social services.

2004: Reproductive health in the oPt: report of a survey.

2004: Peacekeepers and HIV/AIDS: The case of UNAMSIL in Sierra Leone

2004: Reproductive Health and Migration in Europe: An Emerging Policy Challenge

2002: HIV/AIDS and Orphans in Africa: Focus on Malawi

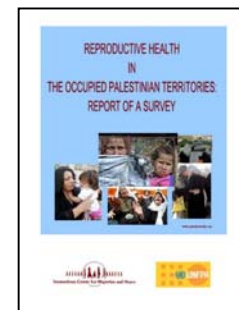
2002: Challenge of Demobilisation, Movement and Reinsertion in the context of HIV/AIDS: Briefing Notes

2001: Reproductive Health in the Context of Forced Migration.

2001: Reproductive Health and Sexual Violence in Refugee Settings: Organisational Response, and Annotated Bibliography.

2000: Disarmament, Demobilisation and Reinsertion: Implications for HIV/AIDS.

2000: Promotion and Protection of Reproductive Health in Humanitarian Crises: Training Manual



List of Collaborators

WHO Collaborating Centre for Health-Related Issues Among People Displaced By Disasters

UNFPA Implementing Agency

List of Partners

Payson Centre for International Develop and Technology Transfer, USA

Institute of Health and Development, Senegal

Institute of Public Opinion Studies, Albania

New University of El Salvador, El Salvador

Sustainable Development Services, Switzerland

IRCCS San Gallicano, Italy

Co-Ordination of Women's Advocacy, Switzerland

Brentford Health Centre, UK

Pathfinder International, USA

ICMH offices:

Geneva, Switzerland

Nairobi, Kenya

Rome, Italy

Sarajevo, Bosnia and Herzegovina

